

Twelve Days of Christmas Earrings



Volume 5

Mylène Hllam
Mill Lane Studio
www.millanestudio.com
<https://millanestudio.blogspot.com>

Twelve Days of Christmas Earrings Vol 5

Glam up your Christmas wardrobe with this sparkly collection of 12 new earring designs for the festive season. There are some fun construction ideas combined with filigrees, wire wrapping and even leather that make these earrings so unique. Some are quirky, some are traditional and some are just plain fun. In all, there are twelve never-before-seen pairs of earrings that will help you spread Christmas cheer and let the world know how much you love Christmas!



Twelve Days of Christmas Earrings Vol 5

Jewellery Making Basics

If you're new to jewellery-making, you'll find it helpful to visit the links below to learn the basic techniques needed to complete these designs before proceeding to make the fabulous earrings in this collection:

- [Turning simple loops](#)
- [Opening and closing jump rings](#)
- [How to make a wrapped loop](#)

You'll find links to many of the supplies within the materials list for each design but from time to time, you'll find that the listed supplier is out of stock or that the item is no longer available. If a link no longer works, the item may have been moved to a different page on the website so try the search bar on their home page to see if you can locate it that way. If you still can't find the item you're looking for, try hunting it down via an image search on Google. Some other places you might find helpful are Amazon and Etsy. If you still can't find a particular item, try substituting with something similar. Please note that I am not endorsing or recommending any of the sources that I have listed, but rather offering these suggestions as a place where you might find the supplies you need if you can't find them locally.

Happy jewellery making!

Mylène



Day 1 - Framed Christmas Trees

Framed Christmas Tree Earrings

Nothing says elegant more than gold and crystal. These wire wrapped, framed Christmas tree earrings will add a glamorous look to your outfit. If you look closely, you'll see the Christmas tree is actually an upturned heart!

Finished length: 6cm (2 3/8")

Time to complete: 90 minutes

Degree of Difficulty: Intermediate



Day 1 - Framed Christmas Trees

Here's what you'll need:



- Two Beadalon Silver Artistic Wire Wrappers - Oval
- Two 12x12mm electroplated clear glass heart bead – vertically drilled
- Two 5mm gold star beads
- Two 3mm gold cubes
- Twenty-two 3mm AB crystal Swarovski bicones
- Two 14x9mm gold bow charms
- Fine gold necklace chain
- 28 gauge silver tarnish resistant wire
- Two 4mm gold jump rings
- Two silver head pins
- Two 20x26mm round silver earring hooks

Tools: flat nose pliers, round nose pliers, flush cutters, nylon jaw pliers,



Cut a 38cm (15") length of wire. Wrap one end around the top notch of an oval wire wrapper component three or four times to secure it.

Day 1 - Framed Christmas Trees



String a crystal and slide it down to the oval.



Wrap the wire around the front of the oval frame and then push the wire (close to the bead end) through the centre of the frame, drawing it through from behind. This will minimise the possibility of the wire kinking as you pull it through. Make sure the bead is sitting on the edge of the frame.



Wrap the wire around the next notch in the frame.

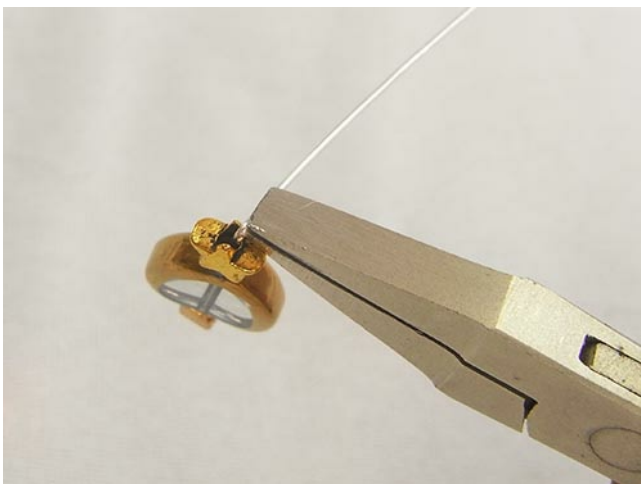
Day 1 - Framed Christmas Trees



Continue wrapping the wire around the frame, adding a bead inbetween each notch until you return to the top. Wrap the wire around the last notch three or four times and then around the loop of the frame to secure it. Trim away both ends of the wire.

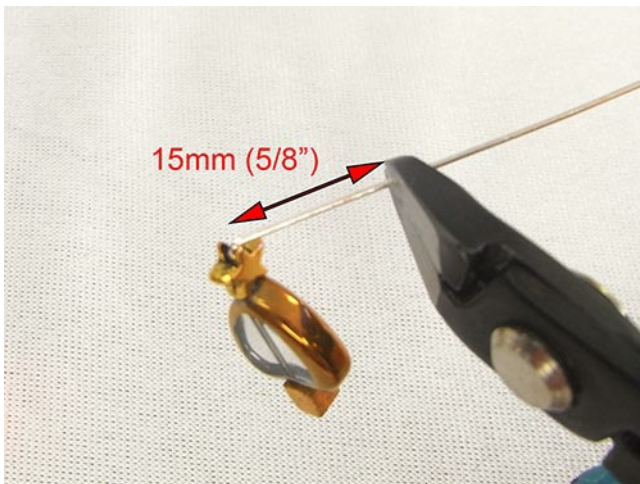


String a cube bead, the heart bead (upside down) and the star bead on a head pin.



Bend the head pin at a 90° angle as close as you can to the star bead.

Day 1 - Framed Christmas Trees



Trim the head pin to 15mm (5/8"). You will need this much length to make a large enough loop to attach to the oval frame.



Turn a simple loop.



Open the head pin loop, hook it through the loop of the oval frame so that the Christmas tree dangles in the frame and then close it again.

Day 1 - Framed Christmas Trees



Cut 5 links from the gold chain. Open the jump ring, hook it onto the loop of the frame and then slide on the last link of the chain.



Slide the first link of the chain onto the earring hook.



Slide the loop of the bow charm onto the earring hook, making sure it is facing the front of the wire.

Day 1 - Framed Christmas Trees



Press the ball of the earring hook against the wire to secure the components in place.

Make a matching earring with the remaining components.

Day 2 - Majestic Ornaments

Majestic Ornament Earrings

The rich red Czech glass beads suspended in ornate silver frames add a touch of majesty to these ornament earrings. The frame components are wired together to create a more ornate frame to highlight the cathedral red beads.

Finished length: 5.5cm (2 1/8")

Time to complete: 2 hours

Degree of Difficulty: intermediate (but needs patience)



Day 2 - Majestic Ornaments

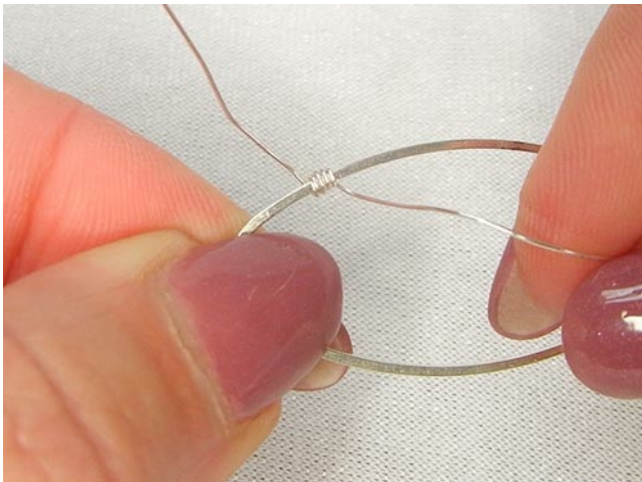
Here's what you'll need:



- Four silver 2 to 1 end connectors
- Two 40x20mm silver oval connector links
- Two 14mm red Czech glass table cut cross beads
- Four 10mm Czech glass round beads
- Four 2mm silver spacer beads
- 26 gauge tarnish resistant silver wire
- Two ball end earring wires
- Twelve 4mm jump rings

Tools: chain nose pliers, nylon jaw pliers, flush cutters, needle tool

Cut two 38cm (15") and one 23cm (9") lengths of wire.



Leaving a 3cm (1 3/16") tail, wrap the wire around the left hand top edge of an oval link four times.

Day 2 - Majestic Ornaments



Centre one of the 2 to 1 connectors on top of the oval link and push the wire wrapping up to the outside of the loop on the connector. Insert the tail of the wire through the loop and wrap it around the oval link.



Wrap it at least once more through the loop and back around the link to anchor it.



Continue wrapping the wire around the link. *Tip: Instead of inserting the tail through the link on each wrap, use your index finger to push the wire nearest the wrap through first. This will minimise kinking in the wire and will make your wire wrapping both neater and faster.*

Day 2 - Majestic Ornaments



From time to time, run the wire through the nylon jaw pliers to straighten it.



Continue wrapping the wire around the connector until you reach the second loop.



Insert the tail end of the wire through the loop and around the link twice to anchor it. Wrap the wire around the oval link four more times.

Day 2 - Majestic Ornaments



Use the needle tool to gently stretch the wire in the loops.



Insert the tail of the wire through the loops and then use the chain nose pliers to draw the wire through, taking care not to let a kink form.



Trim the wire as close to the link as possible taking care not to nick the wire wrapping.

Day 2 - Majestic Ornaments

Add another 2 to 1 connector to the bottom of the oval link in the same manner.



Leave a 3cm (1 3/8") tail and wrap the end of the 23cm (9") wire around the side of the oval link five times, overwrapping the tail as you work. Trim away the excess tail.



String a 2mm spacer, a red disk, a red cross bead, a red disk and another spacer bead.



String a 2mm spacer, a red disk, a red cross bead, a red disk and another spacer bead.

Lay the beads across the oval link and then wrap the wire around the other side of the link five times.

Day 2 - Majestic Ornaments



Cross the wire over the back of the wire wrapping and continue wrapping on the other side of the beads. Cross the wire over the back of the wrapping and insert it back through the beads and out to the side you began stringing from. You might need to manoeuvre the beads in order to get the wire back through them. Wrap the wire around the bottom of the first

side of the oval to balance the wire wrapping and then trim very closely to the link.

Open the loop of the ball end earring wire and slip then top loop of the end connector onto the earring wire. Make sure that it is facing the front.

Make a second earring with the remaining components.

Day 3 - Peace on Earth

Peace on Earth Earrings

It's easy to get wrapped up in the hustle and bustle of Christmas preparations so it's important to remember that Christmas is also about spreading peace on earth and goodwill to all men. Today's earrings convey that message by looking skyward at the seemingly peaceful night sky.

Finished length: 7.3cm (2 7/8")

Time to complete: 30 minutes

Degree of Difficulty: easy



Day 3 - Peace on Earth

Here's what you'll need:



- Two 20x20mm filigree crescent moon chandelier fittings
- Four 7x11mm gold star charms with loop
- Two 18x21mm silver Peace on Earth charms
- Two 12mm freshwater coin pearls
- Four 4mm gold jump rings
- Four 4mm silver jump rings
- Two silver eye pins
- Two silver ball end earring wires

Tools: chain nose pliers, round nose pliers, flush cutters, metal hole punch



Punch a hole near the point of the crescent moon charm on one end with the metal hole punch.

Day 3 - Peace on Earth



Open the two gold jump rings and hook a gold star on each one. Insert one through the one you just punched. Hook the other one through the hole directly above the widest point of the crescent moon.

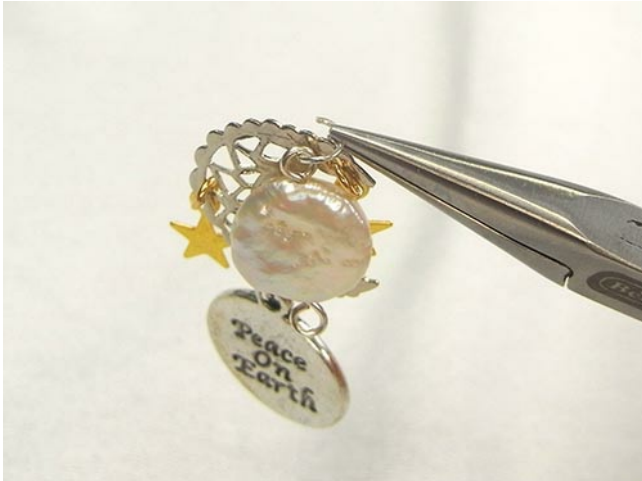


Counting from the right, attach the Peace on Earth charm to the third hole along the bottom of the moon with a silver jump ring.



String a coin pearl onto the eye pin and turn a simple loop.

Day 3 - Peace on Earth



Insert a silver jump ring through the hole next to the hanging star at the top of the moon and hook on the pearl component.



Slip the loop of the coin pearl onto the earring wire and then close the ball loop securely.

Make a matching earring with the remaining components.

Day 4 - Partridge in a Pear Tree

Partridge in a Pear Tree Earrings

On the first day of Christmas, my true love gave to me.... a Partridge in a Pear Tree!

Not quite a partridge and not quite a pear tree but the clean, simple lines of the trees and the soft brassy colour of the dove makes them very stylish indeed.

Finished length: 6.2cm (2 7/16")

Time to complete: 30 minutes

Degree of Difficulty: easy



Day 4 - Partridge in a Pear Tree

Here's what you'll need:



- Two 18-20mm AB Lustre Green Cone Drop crystals
- Two 12mm AB Lustre Green Cone Drop crystals
(www.feelinginspired.com.au)
- Two 5mm metallic green faceted cone beads (from the Brilliance yellow and silver strand by Bead Treasures)
- Two 4mm (2mm deep) gold bead caps
- Two 10x10mm gold clear crystal rondelle bead caps
- Two 15x6mm brass bird beads
- Two 70mm gold head pins
- Two gold earring wires

Tools: chain nose pliers, round nose pliers, flush cutters



Using the chain nose pliers, bend each of the petals of one end of the rondelle bead cap slightly inwards. Place the 12mm cone inside the rondelle and adjust the angle of the petals so that they sit firmly against the bead.

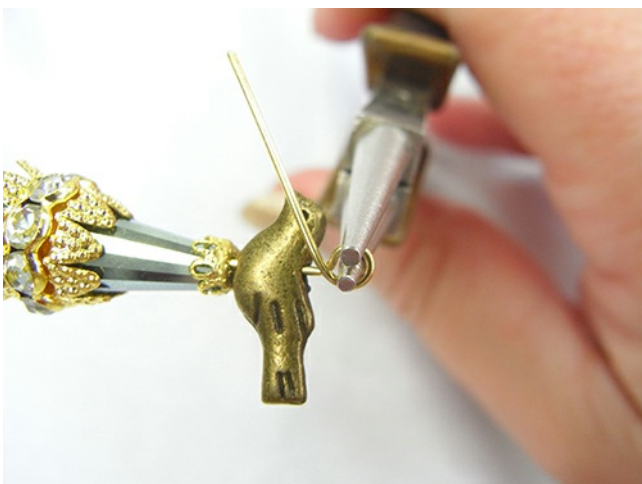
Day 4 - Partridge in a Pear Tree



String the components in the following order: small cone, large cone, rondelle bead cap, medium cone, small bead cap (from the inside) and the bird.



Grip the head pin above the bird and bend it at a 90° angle above the pliers to create a neck.



Place the round nose pliers in the neck of the head pin and form a loop. Make sure the tail crosses the front of the loop.

Day 4 - Partridge in a Pear Tree



Wrap the tail around the neck two or three times until all the beads are firm.



Trim the excess wire and tuck the cut end against the neck.



Open the loop of the earring wire and hook on the tree component. Close the loop.

Make a matching earring with the remaining components.

Day 5 - Santa's Stocking

Santa's Stocking Earrings

Show your fun side and wear a pair of springy Santa's Stocking earrings to your Christmas gatherings this year. The playful coils on this earring will bring a bit of fun and whimsy to your outfits and are sure to be great conversation starters wherever you go!

Finished length: 6.7cm (2 5/8")

Time to complete: 1 hour

Degree of Difficulty: easy



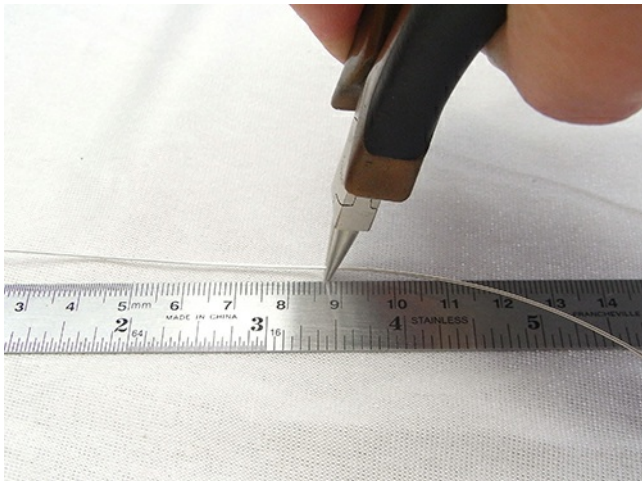
Day 5 - Santa's Stocking

Here's what you'll need:

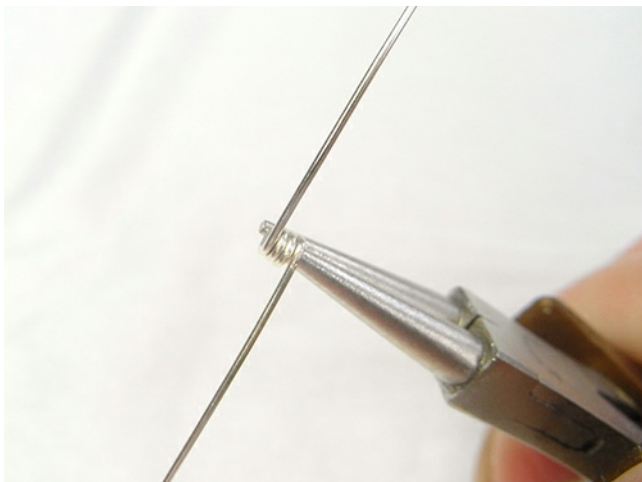


- Two 21mm silver enamelled Santa's stocking charms
- Two 14mm acrylic red star beads with gold splatter
- 22 gauge tarnish resistant gold wire
- Two 20x26mm round gold ball end earring hooks

Tools: chain nose pliers, round nose pliers, bail making pliers, flush cutters, ruler



Cut a 25cm (12") length of wire. Using the round nose pliers, grip the wire 9cm (3 1/2") from one end.



Wrap the longer end of the wire around the tip of the round nose pliers to create three complete coils.

Day 5 - Santa's Stocking



String the star bead from the bottom of the star.



Grip the wire with chain nose pliers above the point of the star and bend it at a 90° angle above the pliers.

Place the round nose pliers in the bend of the wire and wrap it around the jaws to form a loop. Make sure the wire crosses over the front of the neck.



Wrap the wire around the neck neatly.

Day 5 - Santa's Stocking



When you reach the point of the star, wrap the wire around the tip and then three or four times down the star, finishing at the back.

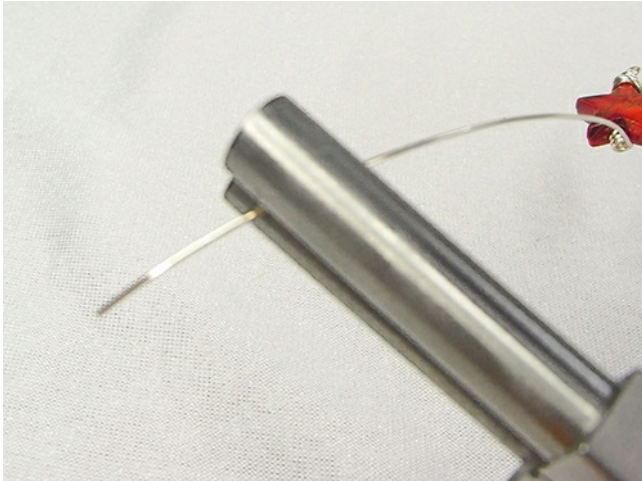


Bring the wire back up across the wire wrapping to the neck and wrap it two or three times to secure it.



Trim away the excess wire.

Day 5 - Santa's Stocking



Switch to the bail making pliers. Grip the wire 20mm (3/4") from the end.



Coil the wire around the thinner of the two jaws until you reach the small coils below the star.



String the stocking onto the coil, making sure that it will face the front.

Day 5 - Santa's Stocking



Coil the tail of the wire around the tip of the round nose pliers three times to secure the stocking in place.



Grip the star in one hand and the stocking in the other and gently pull the coils apart until you are happy with how far they are spread out.

Slide the wrapped loop onto the earring wire and close it.

Make the second earring with the remaining components. Make any adjustments to the earrings so they match.

Day 6 - Glass Dome Christmas Trees

Glass Dome Christmas Tree Earrings

Add some old world charm to your outfits with the charming Glass Domes Christmas Tree earrings. Each globe holds a delightful little Christmas tree adorned with a gold star.

Finished length: 6.8cm (2 5/8")

Time to complete: 1 hour

Degree of Difficulty: easy



Day 6 - Glass Dome Christmas Trees

Here's what you'll need:



- Two 20mm round glass keepsake domes with 12mm hole
- Two 12x7mm metallic green faceted cone beads (feelinginspired.com.au)
- Two 5mm gold star beads
- Six 7mm gold star charms with loop
- Two 6mm gold fluted bead caps
- Two 4mm (x2mm deep) gold bead caps
- Two 5mm (x3mm deep) gold bead caps
- Two 16mm (x4mm deep) gold plated filigree bead caps
- Two 14x9mm gold bow charms
- Two gold seed beads
- Fine gold necklace chain
- Six 4mm gold jump rings
- Two gold eye pins
- Two gold ball end earring hooks
- *Optional: E6000 adhesive*

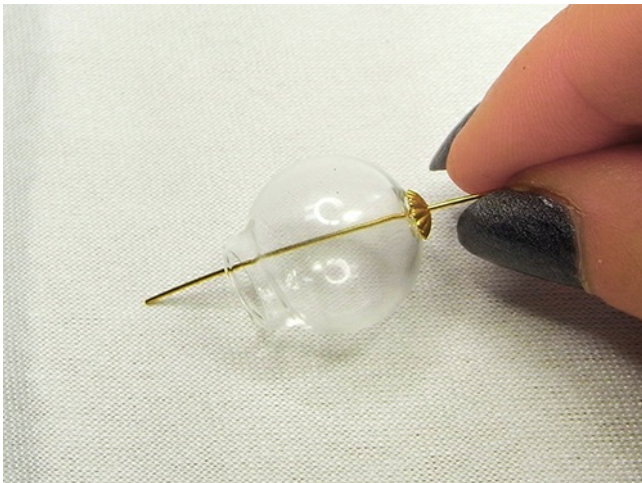
Tools: flat nose pliers, round nose pliers, flush cutters, tooth pick

Clean the globe inside and out with a soft, lint free cloth.

Day 6 - Glass Dome Christmas Trees



Using chain nose pliers, bend each of the points of the filigree bead cap upwards.



String the fluted bead cap onto the eye pin and insert it into the small hole of the glass dome.



String the seed bead, the star bead (from the point first), the 4mm bead cap (from the outside), the cone bead (from the point first), the 5mm bead cap and then the filigree bead cap (from the inside first). Optional: you can apply a small amount of E6000 adhesive to the upturned points of the filigree if liked.

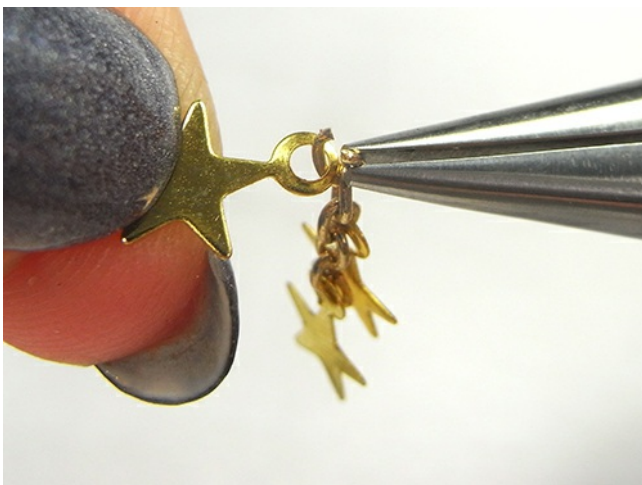
Day 6 - Glass Dome Christmas Trees



Slide all the components along to the loop of the eye pin taking up all the slack. Use the flat nose pliers to bend the eye pin at a 90° angle as close to the filigree bead cap as possible.

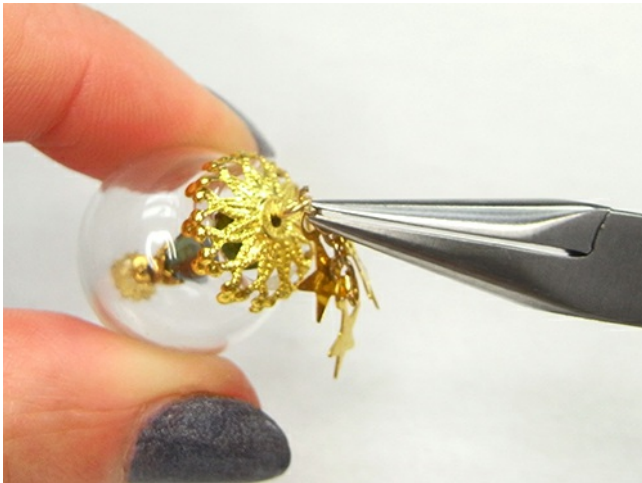


Trim to 8mm (5/16") and turn a simple loop.

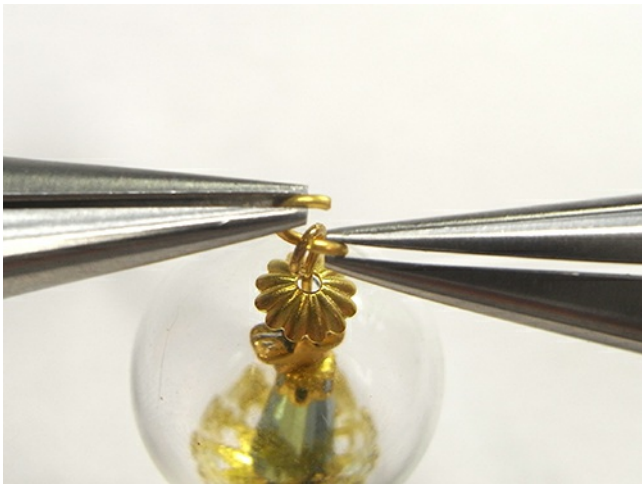


Cut five links from the chain. Open the third link and the last link (as you would open a jump ring) and hook a star charm on each one.

Day 6 - Glass Dome Christmas Trees



Open the first link, hook on a star charm and then attach the link to the bottom loop of the glass dome.



Attach a jump ring to the top loop of the glass dome.



Open a second jump ring, hook it through the first jump ring and then slide on the bow before closing it again. Attach another jump ring to the second jump ring.

Day 6 - Glass Dome Christmas Trees



Slide the jump ring onto the earring hook, making sure the bow is facing the front of the wire.

Press the ball of the earring hook against the wire to secure the components in place.

Make a matching earring with the remaining components.

Day 7 - End Connector Christmas Trees

End Connector Christmas Tree Earrings

If you look closely at your jewellery making supplies you might notice that some of the findings are quite ornate and detailed. When you look at them with fresh eyes you can see what they could be used for instead of what they were intended for, like these graduating end connectors which have been turned upside down to create these classy Christmas Tree earrings.

Finished length: 7cm (2 3/4")

Time to complete: 45 minutes

Degree of Difficulty: beginner



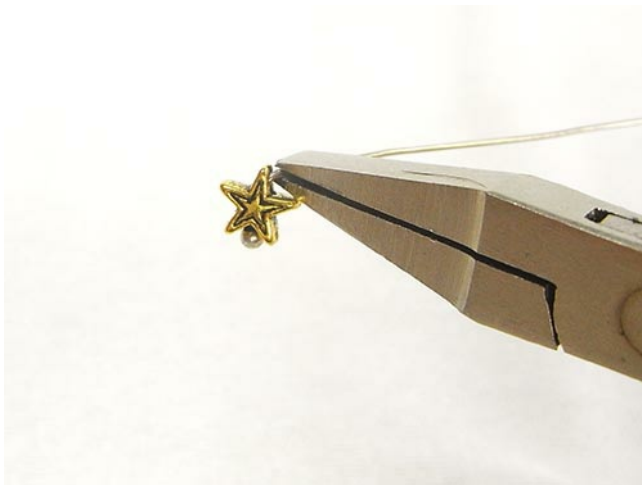
Day 7 - End Connector Christmas Trees

Here's what you'll need:



- Two silver 2 to 1 end connectors
- Two silver 2 to 1 triangle end connectors
- Two silver 3 to 1 end connectors
- Two 11mm silver embossed stars
- Four 5mm gold stars
- Four 6mm gold stars
- Six 5mm silver jump rings
- Eight silver ball head pins
- Two silver eye pins
- Two silver ball end earring wires

Tools: flat nose pliers, round nose pliers, flush cutters



String the gold stars on the head pins from the bottom of the star. Bend each one at a 90° angle as close to the tip of the star as possible.



Trim the ends to 1cm (3/8") for the 6mm stars and 8mm (5/16") for the 5mm gold stars.

Day 7 - End Connector Christmas Trees



Turn a simple loop on each one.



String the silver star onto the eye pin from the bottom. Bend the head pin at a 90° angle just above the tip of the star. Trim to 8mm (5/16") and turn a simple loop.



Insert a jump ring into the top loop of the 3 to 1 connector and hook it through the right hand loop of the smaller 2 to 1 connector. Do the same thing on the other side.

Day 7 - End Connector Christmas Trees



Connect the middle loop of the 3 to 1 connector to the top loop of the larger 2 to 1 connector with a jump ring.



You should now have a Christmas tree shape.



Open the loops of the two 5mm star beads and hook one onto each loop of the top connector. Open the loops of the 6mm star beads and hook them onto the outer loops of the middle connector.

Day 7 - End Connector Christmas Trees



Open the bottom loop of the silver star bead and hook it onto the loop at the top of the Christmas tree.

Slip the top loop of the silver star onto the earring wire, making sure that the components are facing the front and then close the ball loop securely.

Make a second earring with the remaining components.

Day 8 - Leather Spirals

Leather Spiral Earrings

If you're looking for something out of the ordinary in your Christmas earrings, then consider these candy cane spirals made with leather lace and crystals. They're sparkly without being over the top and an unusual design that could be worn throughout the year too!

Finished length: 7.3cm (2 7/8")

Time to complete: 90 minutes

Degree of Difficulty: intermediate



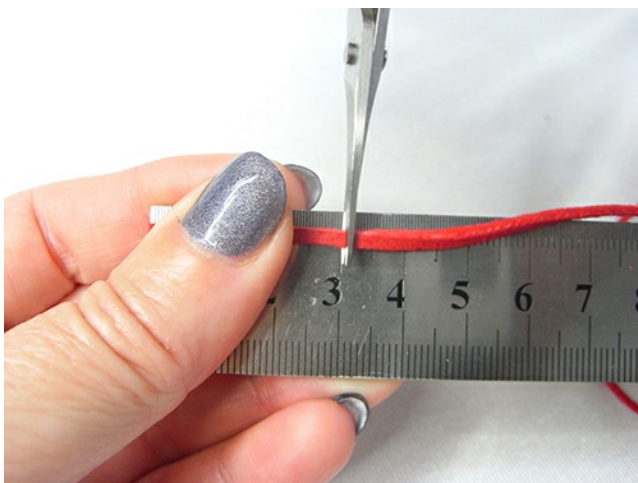
Day 8 - Leather Spirals

Here's what you'll need:



- Realeather Red Sof-Suede Lace – approximately 80cm (31") of 3/32"
- Clear Swarovski flatback crystals: Twenty-four each of SS6 and SS12
- Four 7mm silver filigree basket bead caps
- Two each of 1-loop and 2-loop Bead Landing clear Crystal Charm Drops
- 26 gauge tarnish resistant silver wire
- Two silver ball end earring wires
- Two part epoxy adhesive

Tools: chain nose pliers, round nose pliers, flush cutters, [multihole leather jewelry punch](#), ruler, fine tip permanent marker, scissors, toothpick, disposable plastic tray for mixing adhesive



Cut twelve 3cm (1 3/16") pieces of leather.

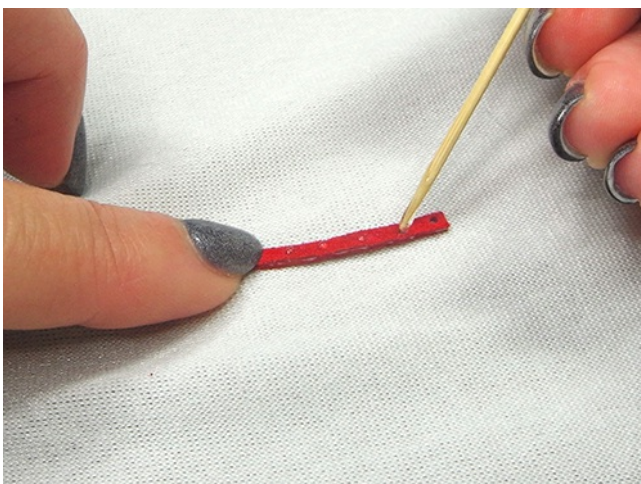
Day 8 - Leather Spirals



Set the hole punch to the smallest hole and line up the point 2mm ($1/16''$) from the end of a piece of lace. Punch a hole making sure the hole is centred. Do this at both ends of every piece of suede lace.

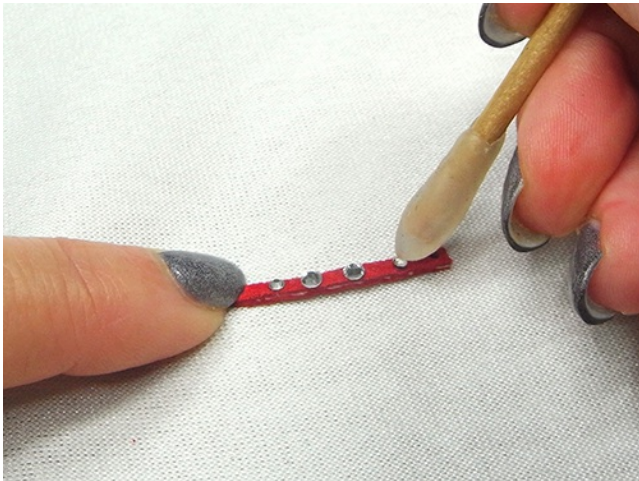


Set aside half the pieces of lace. On the remaining pieces, measure 7mm ($9/32''$) from each end of each lace and place a mark with the permanent marker. Measure 5mm ($3/16$) from each mark and place another mark.



If you are working with 5-minute epoxy, only mix up a small amount of adhesive because it will go off very quickly. Working with just two or three pieces of lace at a time, use the toothpick to apply a small amount of adhesive at each mark.

Day 8 - Leather Spirals



Adhere the smaller crystals on the outside marks and the larger crystals on the inside marks. Mix additional batches of adhesive as required.



Cut a 20cm (8") piece of wire and string on one end of each piece of leather, alternating between the crystal studded lace and the plain lace.



String the free end of the remaining laces in the order that they were strung. Slide the laces along to the centre of the wire.

Day 8 - Leather Spirals



Now, string on the other end of the laces. The easiest way to do this is to slide all the laces close to the stringing end of the wire. Take the free end of the first lace added and slide it onto the wire next to the last lace added.



String a bead cap on one end.



Grip the wire above the bead cap and turn a 90° angle above the pliers.

Day 8 - Leather Spirals



Place the round nose pliers in the neck of the wire and form a loop but do not finish the wrapped loop yet.



Slip on the 1-loop crystal drop and then wrap the tail of the wire around the neck two or three times.



Trim away the excess wire. Slide the components up to the loop if there is a bit of a gap.

Day 8 - Leather Spirals



String a bead cap on the other end of the wire and slide it up to the leather. Create a neck and loop on the wire, then hook on the 2-loop drop. Wrap the tail around the neck and trim away the excess.

Slide the loop onto the earring wire and close the loop. Make a matching earring with the remaining components.

Day 9 - Peace

Peace Earrings

The softly draping chains along with the sparkly crystal connectors in these Peace earrings catch the light as they gently sway with your every move. These are very elegant earrings with a very special message to convey.

Finished length: 9cm (3 1/2")

Time to complete: 90 minutes

Degree of difficulty: intermediate



Day 9 - Peace

Here's a list of what you'll need:



- 24 silver twisted connectors
- 6 clear crystal montees with two loops (silver casing)
- 2 17mm Antique Silver Peace Charms
- 4 silver 2-1 end connectors
- 10 silver 4mm jump rings
- 30 silver 3x2mm oval jump rings
- 2 silver earring wires

Tools: chain nose pliers



Use an oval jump ring to attach a twisted connector to a montee. Create two more of these components. Set one aside.



Use an oval jump ring to add an additional twisted connector to the second component and add two additional twisted connectors to the third component.

Day 9 - Peace



They should look like this.



Create another set of links, omitting the montee.



Open a 4mm jump ring and hook on an end connector. Before closing the jump ring, hook on the long chain, the medium chain and the short chain, so that the shortest chain is in the front. Repeat on the other side of the end connector, making sure the montees face the front.

Day 9 - Peace



Open another 4mm jump ring and connect two end connectors together. Repeat on the other side to form an open frame.



It should look like this.



Connect the two short chains together with an oval jump ring. Make sure there are no twists and that the montee faces forward.

Day 9 - Peace



Repeat with the medium and long chains.



Connect three oval jump rings together. Open a 4mm jump ring and connect the chain of oval jump rings to the peace charm.



Open the earring wire and hook on the top loop of the frame and then hook on the peace charm.

Make a second earring to match.

Day 10 - Star of Bethlehem

Star of Bethlehem Earrings

Milky white stars travel the night sky leaving a trail of glistening crystals and sparkling gold stars in their wake - a heavenly reminder that a Saviour has been born for us. Wear these twinkling Star of Bethlehem earrings and fill your heart with Christmas joy.

Finished length: 6.5cm (2 1/2")

Time to complete: 45 minutes

Degree of Difficulty: easy



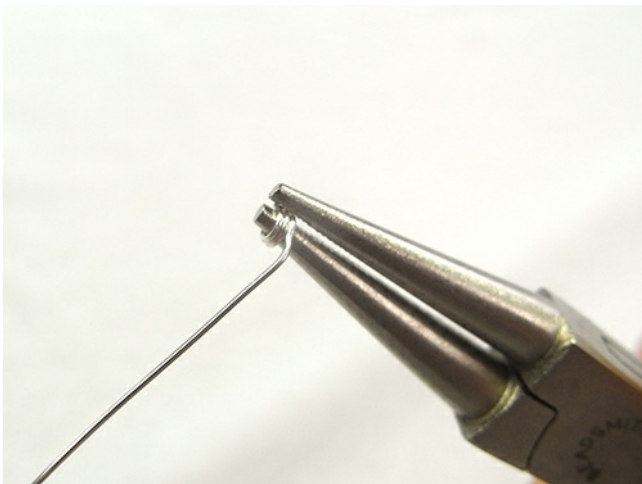
Day 10 - Star of Bethlehem

Here's what you'll need:



- Two 14mm frosted white acrylic star beads
- Twelve 5mm gold stars
- Twelve 4mm AB clear Swarovski bicones
- Twenty-six 2.5mm clear Swarovski bicones
- Two 12x6mm Champagne faceted cones
- 26 gauge tarnish resistant silver wire
- Two silver ball end earring wires

Tools: chain nose pliers, round nose pliers, flush cutters



Cut three 10cm (4") lengths of wire. Coil one end of each wire.

Day 10 - Star of Bethlehem

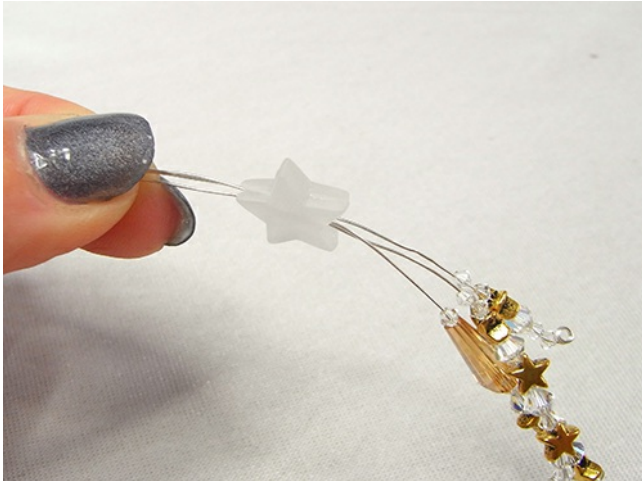
On one, string a 2.5mm bicone, a gold star, 4mm crystal 2.5mm bicone, 4mm crystal, a star, 4mm crystal, 2.5mm bicone, cone bead and a 2.5mm bicone.



On the second wire, string two 2.5mm bicones, a star, a 2.5mm bicone, 4mm crystal star, 4mm crystal, star and two 2.5mm bicones.

On the third wire, string two 2.5mm bicones, 4mm crystal, star and two 2.5mm bicones.

Day 10 - Star of Bethlehem



Insert the three wires through the bottom of the frosted star.

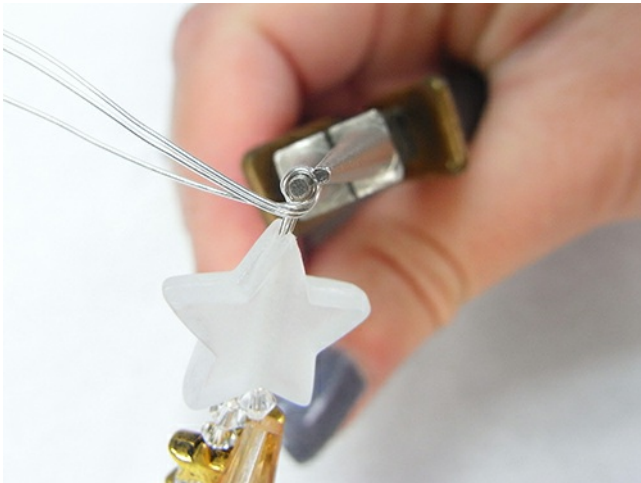


Pull the wires through so that the beads sit neatly below the star. Grip the wires above the point of the star with the chain nose pliers.



Bend the wire at a 90° angle above the pliers.

Day 10 - Star of Bethlehem



Place the round nose pliers in the bend of the neck and form a loop, making sure the wires cross the front of the neck you just created.



Wrap the tails of the wires around the neck to or three times and trim away the excess wires.

Slide the loop onto the earring wire and close the loop. Adjust the curves in the tails of the star to your liking.

Make a matching earring with the remaining components.

Day 11 - Snowflakes

Snowflake Earrings

As with most crafters, jewellery makers often crossover into other crafts and with that in mind, today's earrings include using epoxy clay as part of the construction process. The resin clay is hidden inside where it is barely visible but it provides great adhesion and a very secure way of holding the front and back components together.

Finished length: 5cm (2")

Time to complete: an evening

Degree of difficulty: intermediate



Day 11 - Snowflakes

Here's what you'll need:



- Twelve 9x6mm white alabaster faceted tear drops
- Eighteen 2.5mm clear Swarovski bicone crystals
- Six 6x4mm silver backed clear faceted rice bead
- Fourteen clear PP24 Swarovski pointy back chatons
- Twelve twisted silver bar connectors
- Two 8mm silver rings
- 28 gauge silver tarnish resistant wire
- Two 13x5mm silver snowflake bead caps
- EnviroTex Jewelry Clay
- Silver Pearl Ex
- 5-minute epoxy adhesive
- Two silver head pins
- Two silver ball end earring wires



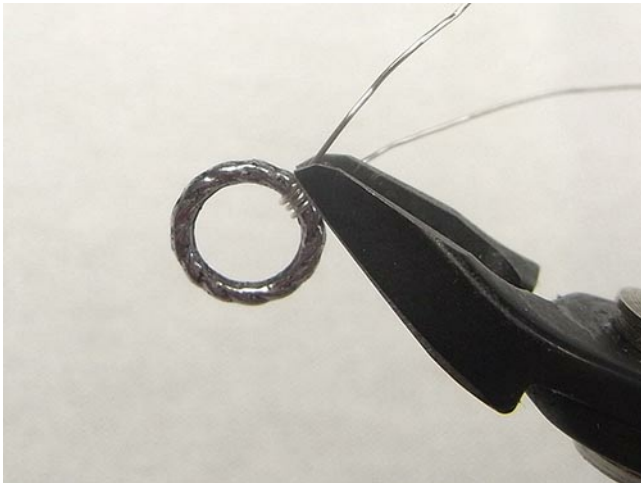
Tools: chain nose pliers, round nose pliers, flush cutters, nylon jaw pliers, soft paint brush, Embellie Gellie (or other tool for picking up chatons) disposable plastic tray (for mixing adhesive), tooth pick

Tip: Create all the components for both earrings at the same time so that you only have to mix one lot of epoxy clay.

Day 11 - Snowflakes



Cut a 38cm (15") length of wire. Wrap one end around the 6mm ring three or four times to secure it.



Trim away the excess wire.



String a crystal, a tear drop (round end first) and another crystal.

Day 11 - Snowflakes



Insert the wire back through the point of the tear drop, pulling the beads up against the ring.



To work out where the next arm of the snowflake should sit, place the ring in the bead cap with the tear drop sitting in between the prongs. You can now easily tell where the next wrap should be.

Remove the ring from the bead cap and wrap the wire once around the ring in this position.

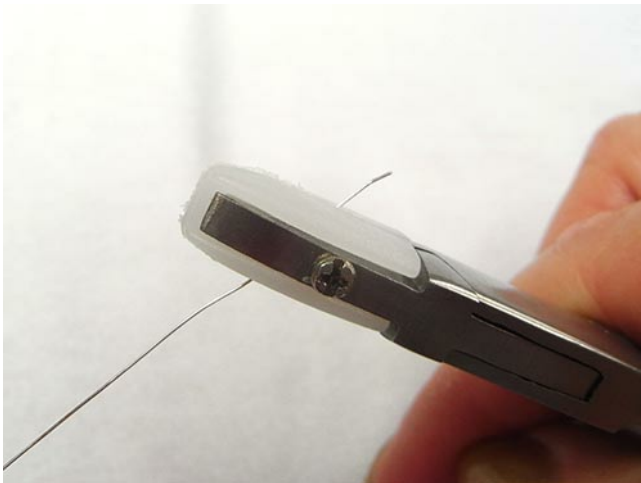


String a crystal, a tear drop and a rice bead onto the wire. Insert the wire back through the tear drop and then wrap it once around the ring as before.

Day 11 - Snowflakes



Continue string the beads in this pattern around the ring until you have created the 6 arms of the snowflake.



Use the nylon jaw pliers to straighten the cut end of the wire.

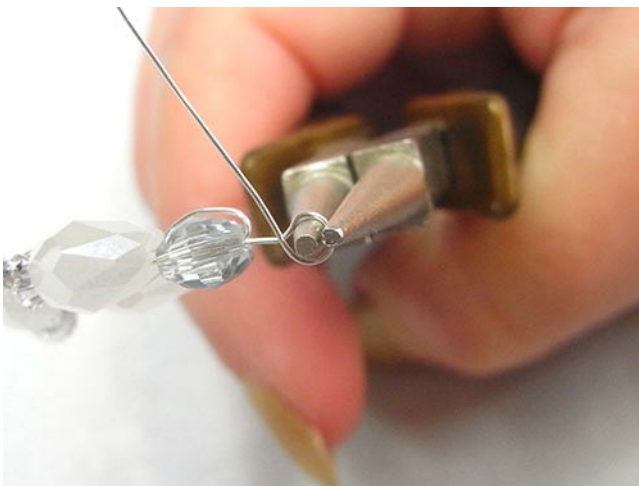


Insert the wire back through all three beads on the last arm and feed it through carefully taking care not to get any kinks in the wire.

Day 11 - Snowflakes



Grip the wire just above the rice bead with the chain nose pliers to form a neck.



Wrap the wire around the jaws of the round nose pliers to form a loop.



Wrap the wire around the neck of the loop.

Day 11 - Snowflakes



Trim the wire close to the neck taking care not to cut the wrong wire.



Wearing gloves, take a piece about the size of a small pea of each part of the jewelry clay.



Mix the two parts together until there is no marbling.

Day 11 - Snowflakes



Pinch a small piece of the mixed clay.



Press it into the bottom of the bead cap.

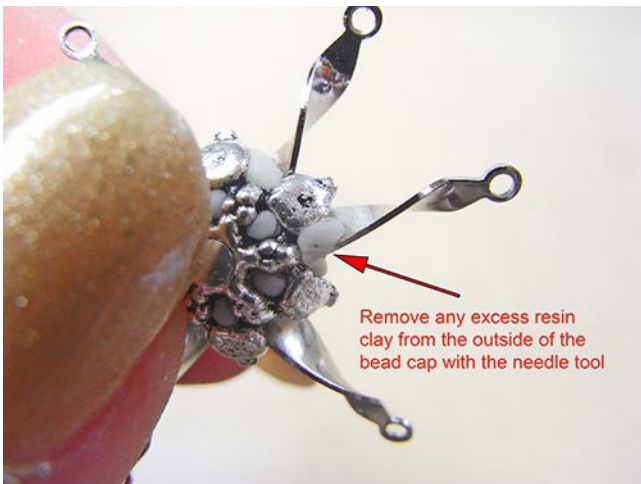


Use the pointed end of the Embellie Gellie tool or needle tool to push any resin which is inbetween the claws of the bead cap back inside.

Day 11 - Snowflakes



Insert the head pin through the bottom of the bead cap. String six twisted connectors onto the head pin positioning an arm inbetween each pair of claws. Press the connectors down into the clay.



Turn the bead cap over and remove any excess resin clay which has oozed between the claws.

Remove any excess resin clay from the outside of the bead cap with the needle tool



Dip the tip of the paintbrush into the Pearl Ex and dust it on the clay.

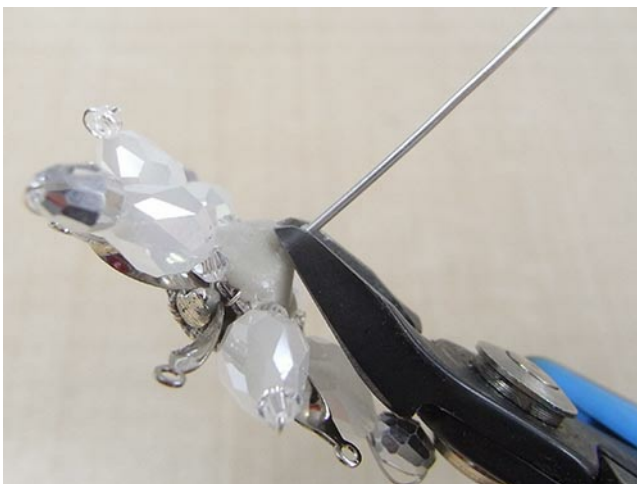
Day 11 - Snowflakes



Place the beaded ring over the head pin and centre it on the clay.



Take another small piece of the mixed clay and form it into a log. Place it over the beaded ring and wrap it around the head pin. Form it into a dome shape.



Cut away the head pin as close to the clay as possible. Place the second bead cap over the clay. If the head pin is protruding, remove the bead cap and trim it further. Remove any excess clay with the needle tool.

Day 11 - Snowflakes



Dust the clay with Pearl Ex.



Mix the 5-minute epoxy according to the package instructions. Apply it to the ends of each twisted connector with the toothpick. Pick up the crystals with the Embellie Gellie tool and position one on each arm. Place one in the centre of the bead cap. Allow the resin clay to dry before assembling the earring.

Slip the wrapped loop of the snowflake onto the earring wire and then close the ball loop securely.

Day 12 - Ornate Christmas Trees

Ornate Christmas Tree Earrings

These elegant Christmas Tree earrings are resplendent dressed in their ornate gold filigree casing and they cast a beautiful red glow like stained glass windows. They are truly gorgeous and will

Finished length: 5.2cm (2")

Time to complete: about 45 minutes

Degree of difficulty: easy



Day 12 - Ornate Christmas Trees

Here's what you'll need:



- Two 22mm electroplated red Christmas tree beads
- Two 40x15mm gold diamond filigrees
- Two 4mm (2mm deep) gold bead caps
- Two 8x9mm Tibetan gold coloured bead caps
- Two 5mm gold star beads
- Two gold eye pins
- Two gold earring wires
- Two part epoxy adhesive
- Methylated spirits (denatured alcohol) for clean up

Tools: flat nose pliers, round nose pliers, flush cutters, needle tool, toothpick, cotton bud (Q Tip), disposable plastic tray for mixing adhesive



Place the centre of the filigree into the lower part of the jaws of the round nose pliers. Press your finger and thumb around the base of the filigree to round one side of it.

Day 12 - Ornate Christmas Trees



Take the filigree out of the pliers, turn it around and then round the other.



The side should be slightly past vertical, i.e. the filigree should be slightly wider at the base than at the top.



Test the filigree for fit. Insert the Christmas tree bead into the filigree. It should be a firm fit.

Day 12 - Ornate Christmas Trees



Whilst the Christmas tree bead is still in position in the filigree, mix up a small amount of 5 minute. Take note of where the filigree touches the bead and then remove the it. Use the toothpick to apply a small amount of adhesive at those points.



Slide the Christmas tree bead back into the filigree.



Clean up any smears of adhesive with the cotton bud and methylated spirits. Allow the adhesive to set for 10 minutes before continuing.

Day 12 - Ornate Christmas Trees



Use the needle tool to remove any excess adhesive that has oozed out from under the filigree.



String the 9mm bead cap, 4mm bead cap, Christmas tree bead (from the base) and the star bead onto a head pin.



Bend the head pin at a 90° angle above the star and trim to 8mm (5/16").

Day 12 - Ornate Christmas Trees



Turn a simple loop.



Open the loop of the earring wire and hook on the Christmas tree component.

Make a matching earring with the remaining components.

Twelve Days of Christmas Earrings Vol 5

Get more Christmas cheer!

For even more Christmas earring designs, check out Volumes 1 - 4 of the Twelve Days of Christmas earrings. There are a whole lot more festive ideas that will help you find just the right Christmas earrings. Each volume has 12 unique designs that will instantly lift your spirits and add a touch of Christmas magic to your outfit.

Click the button to find out more.

Learn more

